



ADMINISTRATION FOR
CHILDREN & FAMILIES

 Office of Child Care

2025 State and Territory CCDF Administrators Meeting (STAM)

July 22–24, 2025

**Hyatt Regency Reston
Reston, Virginia**



Introduction to Parental Choice



Introductions

Suzanne West

Technical Assistance Liaison
National Center on Subsidy
Innovation and Accountability

Liz Riley

Equal Access Subject Matter Expert
National Center on Subsidy
Innovation and Accountability

Julie Ingersoll

Equal Access Subject Matter Expert
National Center on Subsidy
Innovation and Accountability

Heather Mattison

Equal Access Subject Matter Expert
National Center on Subsidy
Innovation and Accountability



1

Equal Access Components

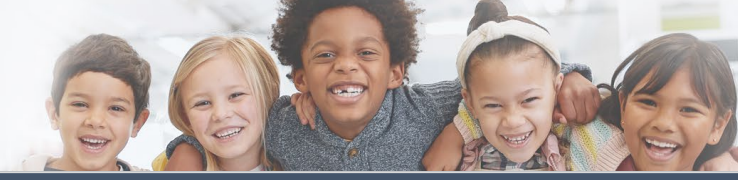
2

Equal Access Quiz

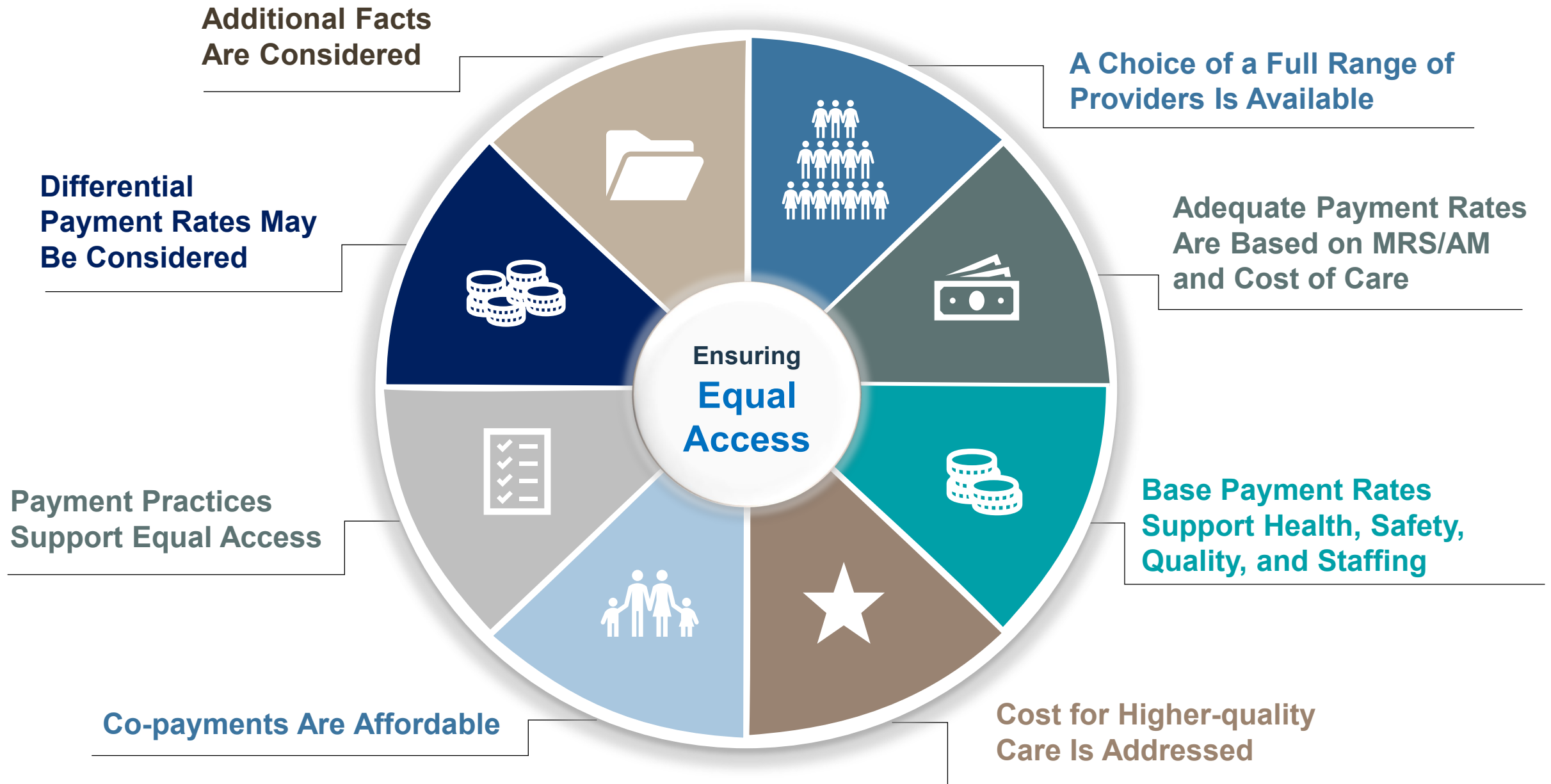
3

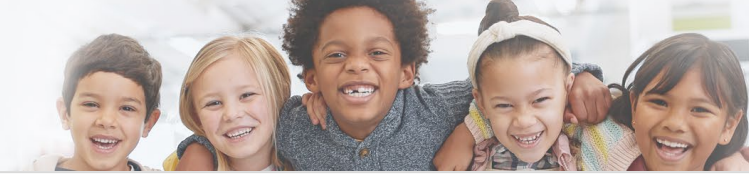
Reflections and Questions

Agenda



Equal Access Components

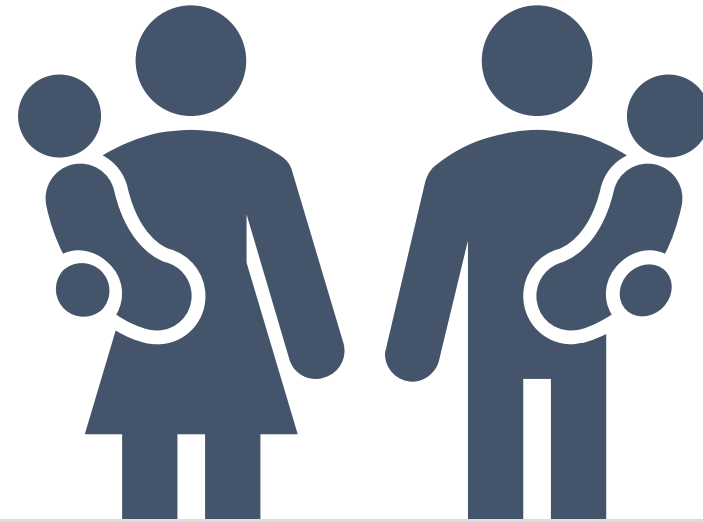




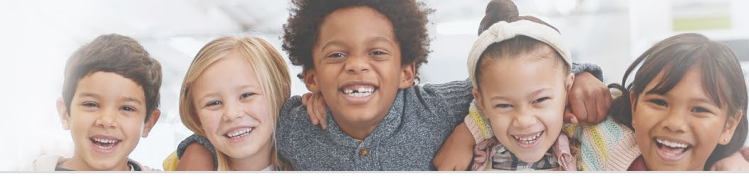
Parental Choice

Ensure a choice of a full range of providers is available, including:

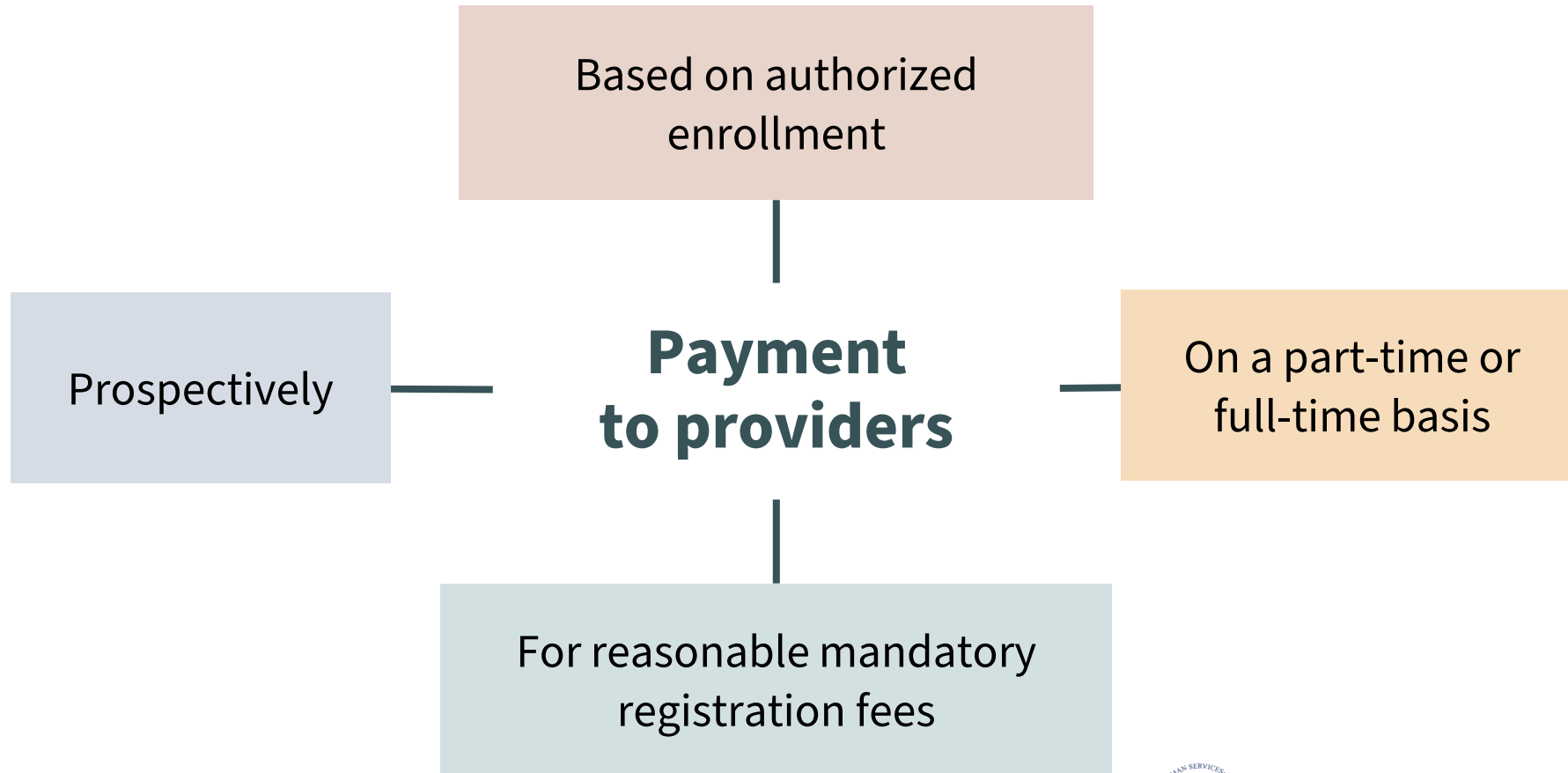
- Center-based care
- Family child care
- In-home care
- Out-of-school time care
- Preschool programs
- Faith-based programs



Co-payments are affordable



Payment Practices Support Equal Access





Assessing Market Rates and Child Care Costs

At least every three years, Lead Agencies must complete a **market rate survey** or an **OCC-approved alternative methodology** that meets the following requirements:

- Develop it in consultation with specified partners
- Conduct no earlier than 2 years before the date of submission of CCDF Plan
- Reflect results in a report
- Post the report online



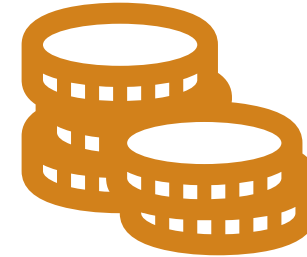
A narrow cost analysis must also be completed.



Setting Payment Rates

Rates must be set in the following ways:

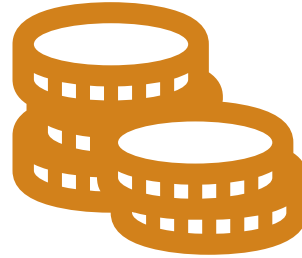
- In accordance with the results of the market rate survey or alternative methodology.
- At a level to ensure equal access for eligible families.
- Adequate to meet CCDF health, safety, quality, and staffing requirements, and take into consideration the cost of higher quality.





Setting Payment Rates

Rates can be differentiated based on geography, ages of children, quality of care, hours of care, or a child's need.



The Lead Agency can pay the full established subsidy rate even if it is higher than the private pay rate.



Equal Access Quiz!



Questions and Discussion



Resources



Improve Payments to Child
Care Providers

<https://childcareta.acf.hhs.gov/improve-payments-child-care-providers>



Equal Access, Market Rate
Surveys, and Alternative
Methodologies

<https://childcareta.acf.hhs.gov/equal-access-and-market-rate-surveys>

National Center on Subsidy
Innovation and Accountability

<https://childcareta.acf.hhs.gov/center/national-center-subsidy-innovation-and-accountability>



Alternative Methodologies

<https://childcareta.acf.hhs.gov/alternative-methodologies>





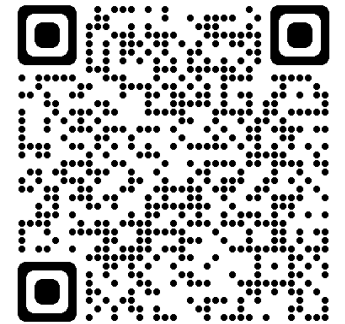
Technical Assistance Is Available



Help is available to CCDF Lead Agencies and is individualized for your needs. To request technical assistance:

- Talk to your regional office, or
- Submit a request through the technical assistance request form:
<https://bit.ly/3OHXOLP>

Ask for TA



Thank you!

Email: ncsia@wrma.com

Phone: 301-881-2590 x273



The National Center on Subsidy Innovation and Accountability is funded by the Office of Child Care, Administration for Children and Families, U.S. Department of Health and Human Services.