



ADMINISTRATION FOR
CHILDREN & FAMILIES

Office of Child Care

2025 State and Territory CCDF Administrators Meeting (STAM)

July 22–24, 2025

Hyatt Regency Reston
Reston, Virginia



Recruiting Faith-Based Child Care Providers: Strategies to Support Parental Choice

Presenters:

Michelle Golus, National Center on Early Childhood Quality Assurance

Erin Mewhinney, National Center on Early Childhood Quality Assurance

Sheri Fischer, National Center on Early Childhood Quality Assurance



Welcome and Introductions

Introduce yourselves to your table partners:

- Name
- State, territory, or Tribe
- Role in early childhood education systems
- One thing you are hoping to hear today (in one sentence)





Session Objectives

- Recognize the role of faith-based providers and examine current engagement.
- Explore how CCDF can support faith-based providers.
- Share effective strategies for outreach and support.
- Recommend actions to strengthen parental choice.





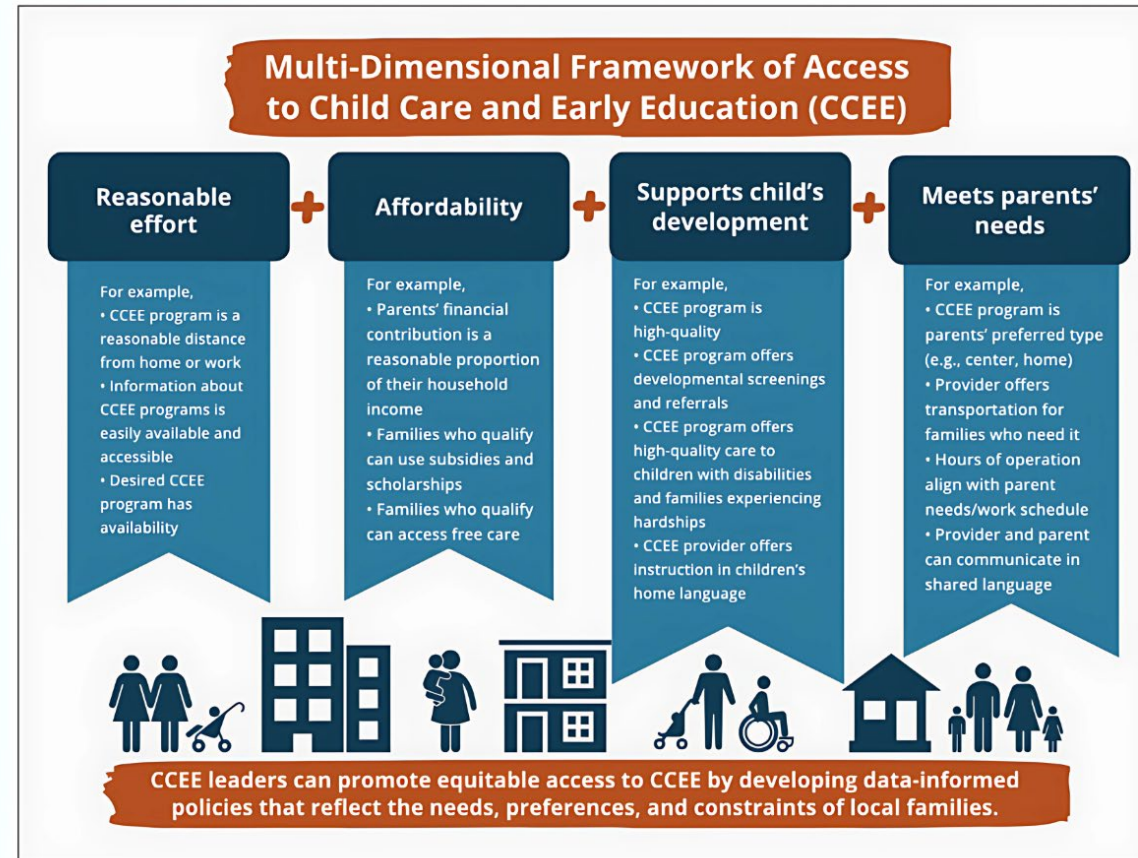
Opening Question

In a landscape where parental choice is essential and trust, accessibility, and alignment with family values matter deeply ...

- What shifts are needed to prioritize goals and objectives to ensure more faith-based providers are engaged and supported in the ECE system?



Access Framework



Paschall, K., & Maxwell, K. (2022). *Defining and Measuring Access to Child Care and Early Education with Families in Mind*. OPRE Report #2021-232.



ADMINISTRATION FOR
CHILDREN & FAMILIES





Guest Presenter

Ben O'Dell

Senior Advisor

HHS Faith Center

U.S. Department of Health and Human Services



What Do We Know about Faith-Based Providers?

- What do you know?
- What do you wish you knew?
- What do you need to know?





Faith-Based Child Care

Caring for children is a mission of many faith-based organizations

Lindner, E. W., Mattis, M. C., & Rogers, J. R. (1982). *When churches mind the children: A study of day care in local parishes*. Ypsilanti MI: The High/Scope Press.

Families choose care based on trust, values, and quality

Bipartisan Policy Center (January 2021). *Parent Child Care Preferences: Are They Changing?* [Webinar slides].

Expanding parental choice

Office of Child Care. (April 29, 2005). *Information Memorandum: Expanding Educational Freedom and Opportunities for Families* [ACF-OCC-CCDF-IM-25-04].

Approach aligns with child development and well-being

Morris, S., & Smith, L. (2021) *Examining the Role of Faith-Based Child Care*. Washington, DC: Bipartisan Policy Center.



Small Group Activity





Call to Action

Option 1

- It is 2030, and you are headlining the next strategic plan. What is your vision for expanding parental choice and recruiting more faith-based providers into the ECE system?

Option 2

- Map out next steps you will take when you return from STAM. This could be initiatives, meetings, partners, communication strategies, etc.



Questions?





Technical Assistance Is Available

- Please use this QR code or corresponding web link to request individualized technical assistance.





National Center on Early Childhood Quality Assurance

1902 Reston Metro Plaza
Reston, VA 20190
Phone: 877-296-2401
Email: NCECQA@icf.com

[Subscribe to OCC Updates](#)